

FITTING INSTRUCTIONS

Have you read the pre-installation notes?



The following instructions correspond to our latest information. We advise you to carry them out carefully and thoroughly to prevent mistakes during the fitting process, which could result in damage to the product, loose fixings or a weak surface bond.

IMPORTANT

- The manufacturer or supplier will not accept responsibility for any failures due to an improper installation sequence.
- Our products should not be fitted to newly laid asphalt surfaces. The surface should be allowed to fully cure for at least a week prior to installation to ensure it has de-gassed and become fully consolidated. Concrete surfaces must have at least 40mm thickness of wearing course.
- The surface must be swept and dried before installation to ensure it is free of debris, water, oil and chippings.
- Fitting should not be carried out during inclement weather such as rain and minus temperatures.
- The completed installation, especially fixings, should be checked on a regular basis by the client/contractor.

- 1 Lifting eye
- 2 Roadfix adhesive kit, comprising parts A, B and C (1 adhesive kit per piece)
- 3 Paddle mixer
- 4 14mm SDS drill bit
- 5 Resin anchor cartridge
- 6 Cage gun
- 7 Plastic plugs
- 8 Coach screws
- 9 Plug covers



FITTING

Surface Fixed Rubber Products

ROADFIX KIT

INSTRUCTIONS

Prior to installation, please ensure that you have all the supplied components and equipment:

- Lifting eye
- Roadfix adhesive kit, comprising parts A, B and C (1 adhesive kit per piece)
- Paddle mixer
- 14mm SDS drill bit
- Resin anchor cartridge
- Cage gun
- Plastic plugs
- Coach screws
- Plug covers

Equipment required:

- Lifting equipment (crane/digger)
- Lifting straps or chain and hook
- Latex gloves & safety glasses
- Measuring & marking equipment
- Stanley type knife
- Hammer
- SDS drill and 3/4" standard chuck drill
- Compressor, generator & blow lance
- Impact driver (nut runner)
- 19mm socket
- Pliers/screwdriver
- PPE



TRAFFIC ISLANDS

'D' ISLANDS

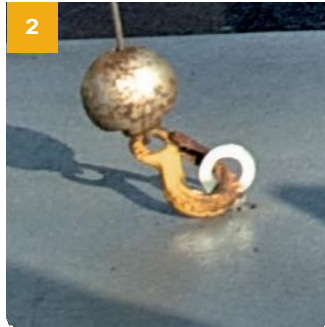
SATELLITE ISLANDS

LANE SEPARATORS

PREPARATION



1 Mark out location area with chalk or tape.



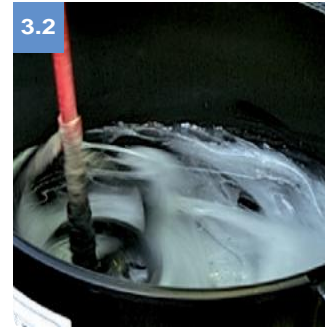
2 Screw the lifting eye supplied into the centre hole until fully tight (middle 2 holes on the LS range). Locate straps or chain through the eye ready for lifting.

MIXING 'ROADFIX' BEDDING ADHESIVE



3.1 Three component system, only to be mixed after the area has been marked out. **DO NOT MIX IF RAINING**

Read MSDS safety data sheets.
Wear eye protection and PPE.
Ready the standard 3/4" chuck drill with paddle mixer.



3.2 Open the tin (part A), plastic bucket (part B) and bag of rubber (part C) for mixing.

Holding the plastic bucket (part B) securely, slowly stir the liquid for 10 seconds.

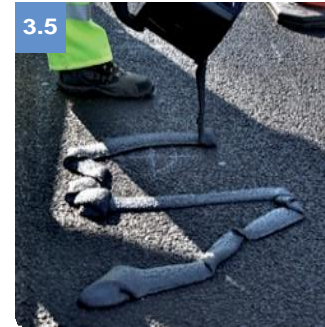


3.3 Using a second person, slowly add the liquid from the metal tin (part A), pouring over 20 seconds whilst continuing to mix.



3.4 Add half the contents of the rubber powder (part C) - mix thoroughly.

Add remainder of the rubber and continue to mix until an even consistency has been reached.



3.5 Pour the entire contents into the middle of the marked area.

Spread evenly over central square metre area only using a squeegee or float.

FITTING



4 Lift the unit onto the glue bed.

FITTING



- » Ensure correct positioning before drilling.
- » Refer back to stage 3.1 for 2 piece units.



- » Using an SDS drill with the 14mm drill bit provided, carefully and vertically drill out the holes to a depth of 110mm. **Tip:** Mark depth on bit using tape 240mm up from the drill point.



- » Blow out the holes using compressed air to clear out any Roadfix residue/dust left from the drilling. **Note:** Wear eye protection as Roadfix adhesive can be forced up the holes with the dust.



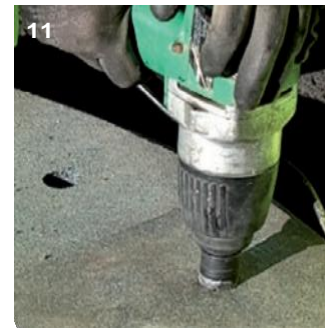
- » Clip the anchor resin cartridge to the cage gun, cut off the end, attach the nozzle and squeeze the trigger to pre-mix the two components in the nozzle until a uniform mix exudes. Use the spent Roadfix container.



- » Insert the gun and nozzle to the bottom of every hole.
- » Squeeze and withdraw the gun slowly until the liquid is visible at the surface. **Note:** The hole must be filled completely with resin.



- » Following on quickly behind, Insert the plugs into each hole and tap down until they are through and past the metal base bracket. **Note:** Forcing the coach screw and plug through together will only expand and damage it, preventing full penetration.



- » The screws should then be hand turned in and tapped gently to start. Crank down fully in a crisscross formation across the unit using a 19mm socket and air/electric impact driver (nut runner). **Note:** Using a manual hand ratchet will not provide sufficient torque and strength to tighten the screws sufficiently, and may affect the warranty due to poor installation.



- » Apply a small amount of the remaining anchor resin to the bolt heads of the shallow holes (thin covers) and the side wall of the thicker covers for the deeper holes. Fit the screw covers using a flat screwdriver to guide in. Tap in flush with a lump hammer and wipe off any residue.



- » Place all fixing waste into the large mixing tub supplied and dispose of responsibly.